



# THE FARM

**Architect: Richard Shugar AIA, LEED AP**  
**Co-Designer: James Givens**  
**Project Manager: Gabriel Greiner AIA, LEED AP**  
**Landscape Architecture: Schirmer Satre Group**  
**General Contractor: Essex General Construction**

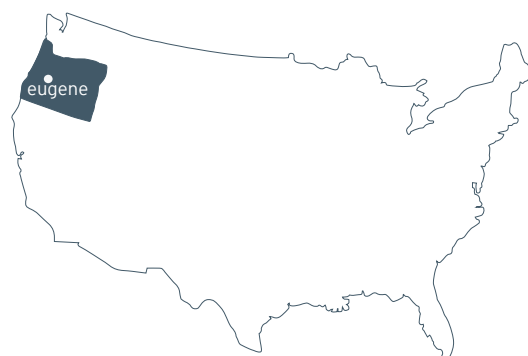
Completed 2008  
Eugene, Oregon  
43200 sf new construction



## The Site

Located in the heart of Eugene's Cal Young neighborhood, the Farm was designed with the objective of making high-quality living spaces for homeowners with a busy lifestyle.

The neighborhood was developed around a series of private and public garden spaces and offers upscale dwellings that live like well-crafted custom homes, yet have the conveniences and low-maintenance benefits of condominium living. Each unit has its own garden space that connects to the living room, extending the living space outside and providing private outdoor views.







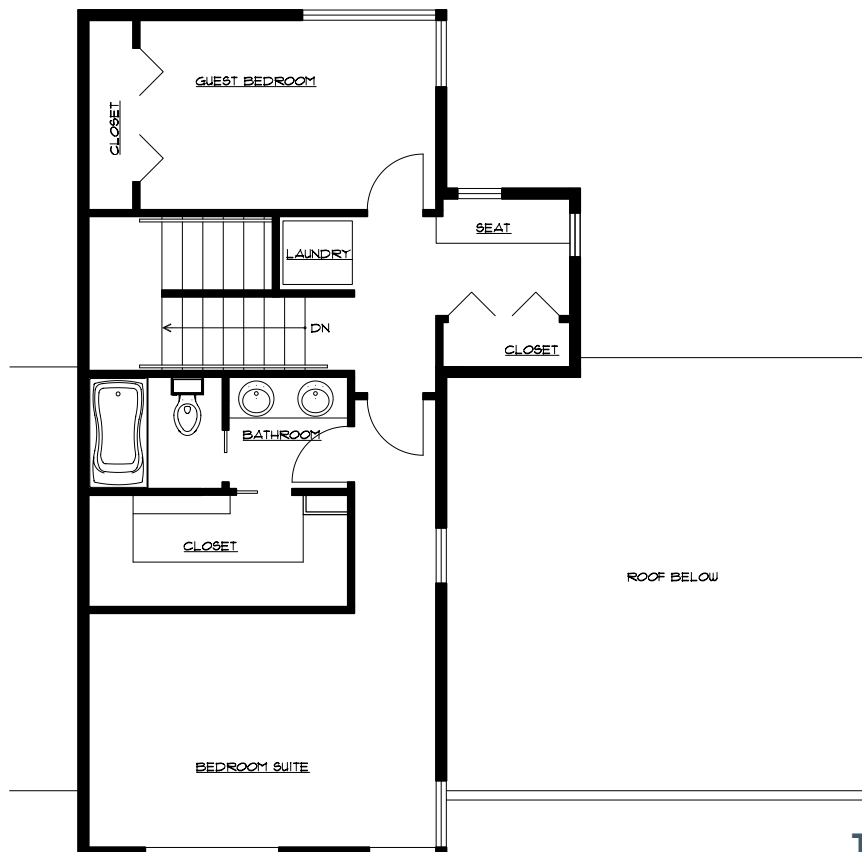
# Concept Design

This pedestrian-oriented community is located in close proximity to Eugene's extensive network of walking and biking paths, and further its central location within Eugene allows for convenient access to shopping and entertainment.





Two-Plus Unit - First Floor Plan



Two-Plus Unit - Second Floor Plan











*the farm*

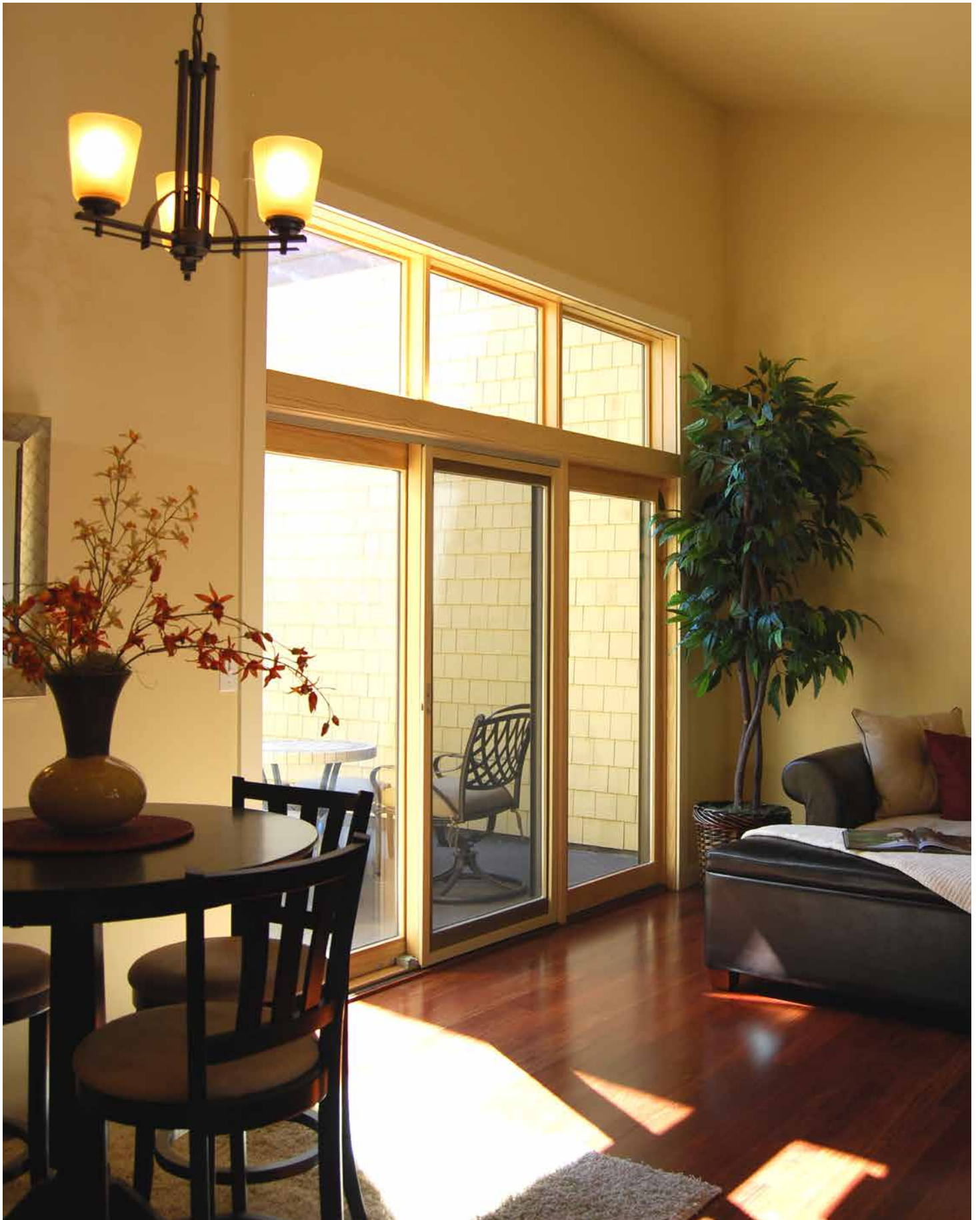
ON CAL YOUNG ROAD



















Each unit has its own garden space that connects to the living room, extending the living space outside and providing private outdoor views.

The interior spaces feature open, flexible floor plans with vaulted ceilings and expansive window openings that provide abundant natural light. Other amenities include cedar roof shingles, wood siding, high-quality windows and doors, hardwood floors, granite countertops, cherry cabinets, stainless steel appliances, gas cook tops, large closets, and spacious master bedroom suites with integrated bathrooms.





121 Lawrence Street  
Eugene, OR 97401  
541.342.5777

[www.2-form.com](http://www.2-form.com)



**one** people + **one** environment = **2fORM** Architecture