

# DILLARD LANDING

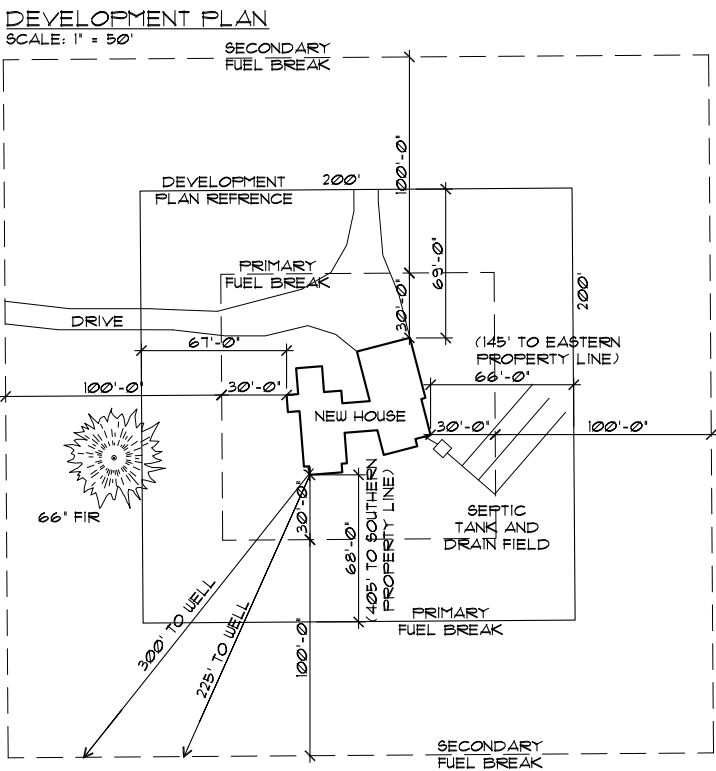
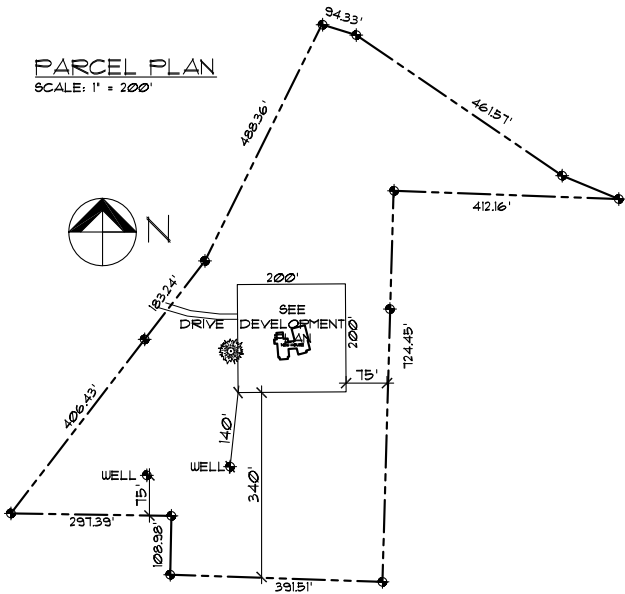
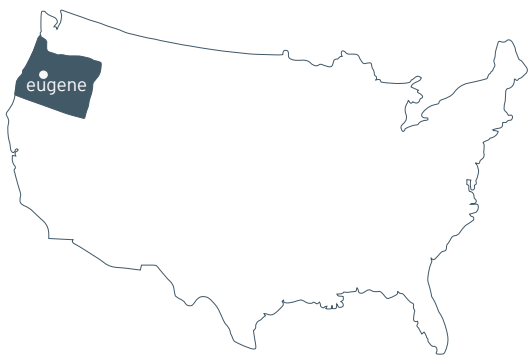


**Architect: Richard Shugar AIA, LEED AP**  
**General Contractor: Mica McOmber Construction**

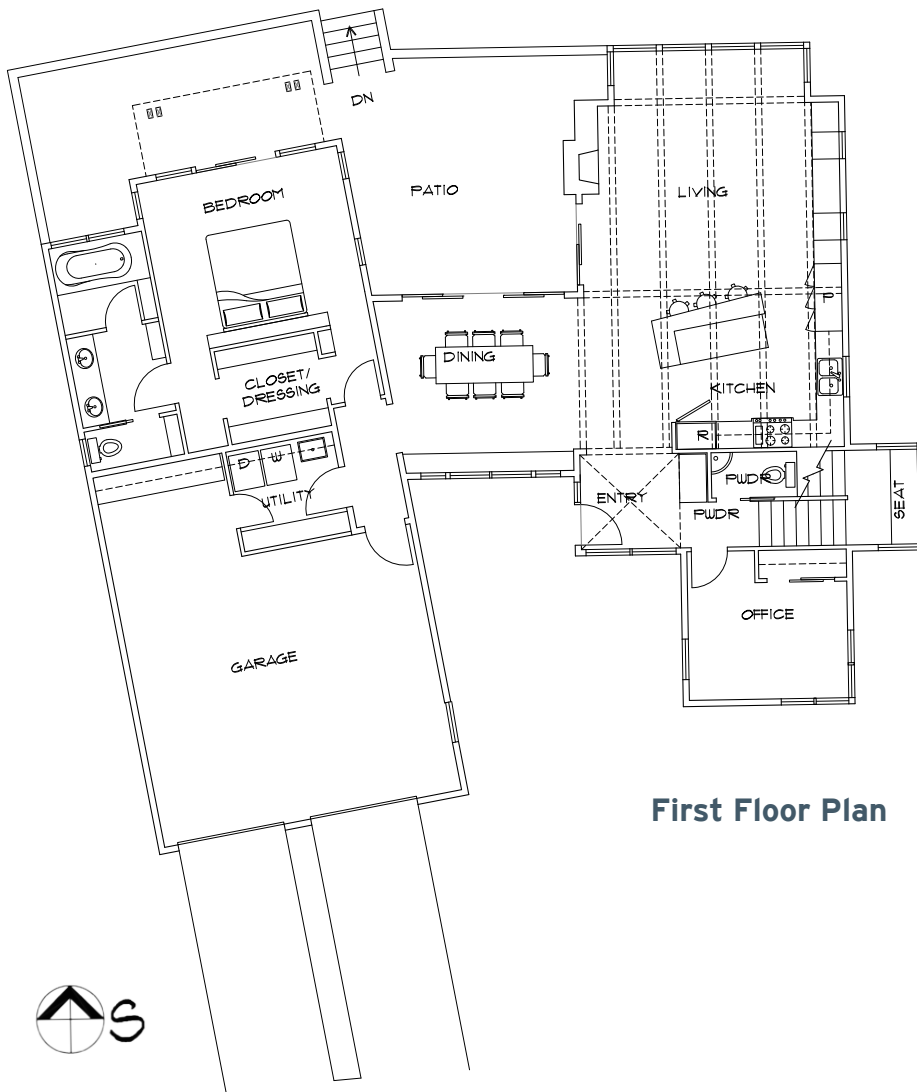
Completed 2011  
Eugene, Oregon  
2500 sf new construction

The Site

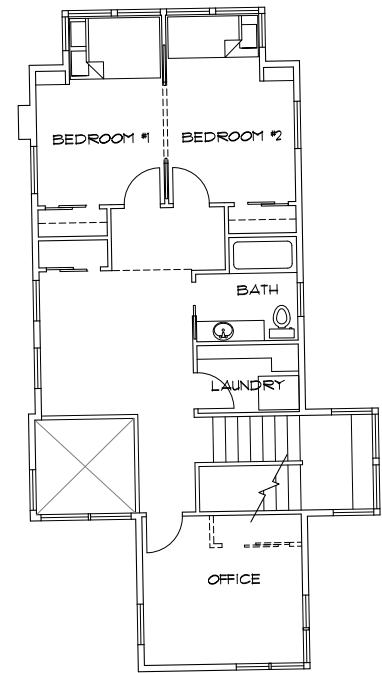
Dillard Landing’s 10 - acre site straddles the top of a hillside with a south-facing view of the Willamette Valley. The home was oriented towards the view to maximize daylighting and solar gain.







**First Floor Plan**



**Second Floor Plan**



## The Plan

The goal of the project was to provide a plan that made efficient use of space while embracing the site and the views it afforded. The program quickly resolved itself into two arms that embraced a south-facing courtyard bridged by a dining room with a second floor roof deck.

The home's wood structure is expressed everywhere, allowing expanses of windows to fill the voids between columns. Warm materials fill the light-flooded interiors and invite the inhabitants to linger while taking in the views.



### Entry Court

Creating a seamless transition was accomplished using large expanses of glass. The approach to the house subtly reveals the space and beyond and thus visually increases its modest scale.













## Interiors and Finishes

Dillard Landing is a craftsman's house built by the craftsman, and the detail work shows up very clearly in the kitchen. The space is flooded with light from the surrounding living and dining spaces, so dark glass tiles worked well for the backsplash.

The owners chose light wood for the cabinets on the walls, and a beautiful walnut for the two-level island. Bar stools allow family and friends to visit while the cook is working, and the higher level on the living side shields some of the kitchen mess. Pantry cabinets store bulky foods, and the refrigerator is incorporated into the end of the counter area.





















121 Lawrence Street  
Eugene, OR 97401  
541.342.5777

[www.2-form.com](http://www.2-form.com)



one people + one environment = 2fORM Architecture