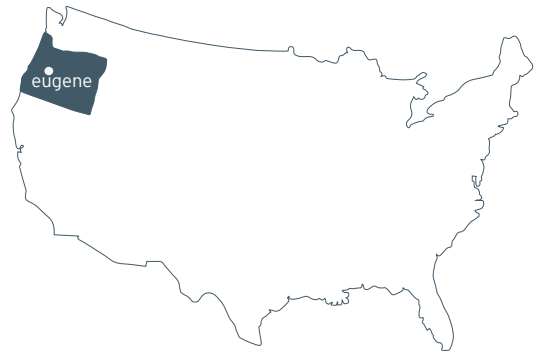


FOX HOLLOW RESIDENCE



Architect: Richard Shugar AIA, LEED AP
Project Manager: Gabriel Greiner AIA, LEED AP
General Contractor: Morrow & Sons Timberframing

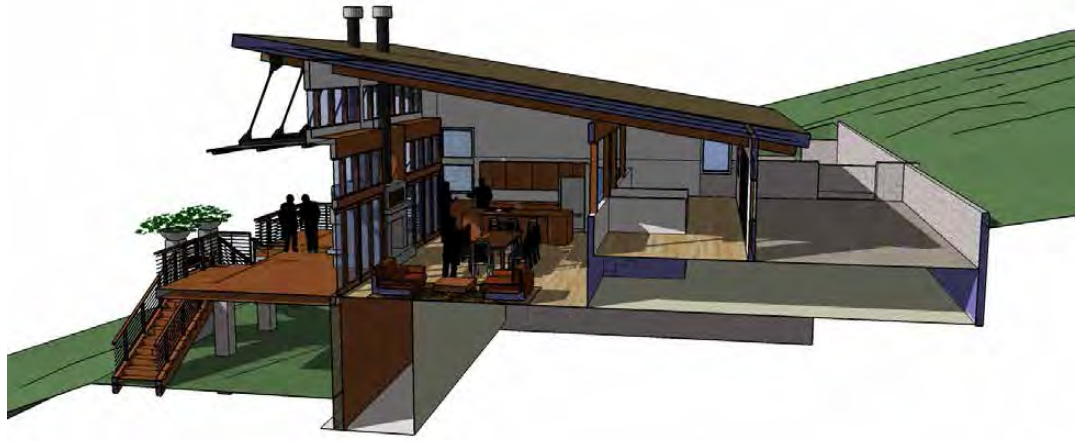
3950 sf new construction
Eugene, Oregon
Completed 2008



The Site

The Fox Hollow Residence, located in Eugene, OR, is oriented for maximum exposure to the sun and views of the stunning nearby mountains. With a southwest exposure and sight lines all the way to the coast range, the site of the Fox Hollow house was specifically designed to capture the views from every room.





Preliminary Design

Designs for the Fox Hollow Residence feature three distinct sections: one for utility, one for living, and one for a bedroom. With the living spaces accessible on the same level, the residence is effectively compartmentalized into three lofted apartments. The resulting smaller-

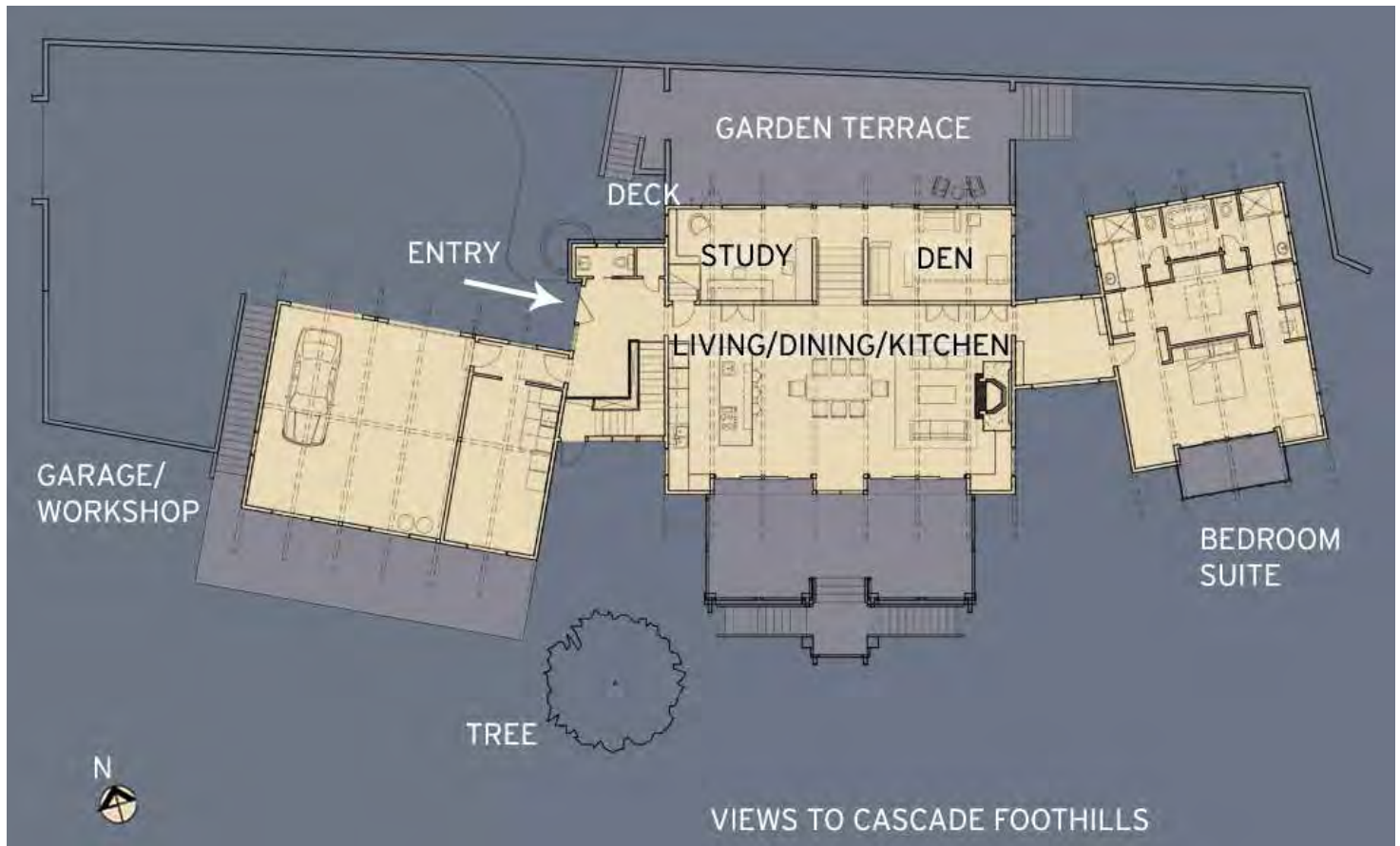
scale structures reduce the environmental impact of the home on the site. In the living room, walls stretch two-stories high, making them a perfect place for the art-collecting owners to display their favorite pieces.



Sustainability Strategies

Not content to merely admire nature from afar, Shugar closely monitored the house's impact on the immediate environment as well. "I think the first step to sustainability is reducing the building's footprint to essential rooms and spaces" he says. In another important step, he and his team decided that air conditioning was

expendable. Large, operable windows open to the vistas, and pair with ceiling fans to move the air throughout the space. Large roof overhangs shield the rooms from direct heat, effectively controlling the home's temperature in the precipitation-heavy Northwest.



Sustainable features include:

- Recessed sliding doors shield glass from sunlight for a cooling effect
- Rainwater is collected from the sloped roofs and filtered in a bioswale before flowing back into a nearby creek
- All beams are salvaged blown-down trees from eastern Oregon forests
- Roof overhangs shield the structures from direct sunlight
- Local concrete used on foundations
- Floor vents allow cooler air to flow from basement









Entry Court

Built into the hillside, the entry courtyard of the Fox Hollow home evokes a sense of calm as you approach, with little that hints at the expansive views through the southwest - facing windows in the entry hall.

Behind the CMU block wall is a private courtyard that opens into the upper living areas, and gives the owners a shady gardening space.





Entry

Transition area stairs between the garage and main living space lead down to guest bedrooms tucked into the hillside. The stairs present a slice of the larger scene that's visible in the main living spaces. Storage for coats and a bench complete the entry area.

An up-close preview of the fine detailing throughout the house is visible in the stair rail and stairwell brackets.





Living Area

Directly off the entry, which serves as a bridge between the utility area and the main living area, you enter into a light-filled, vaulted living area. The kitchen, dining and living area are combined in this one large room that faces spectacular views of the Cascade foothills.

The office spaces sit behind a low wall overlooking the living space and views to beyond the foothills. A patio door on the office level opens onto a private patio, balancing the light in the upper spaces.









Kitchen

The kitchen in the Fox Hollow Residence was specifically designed to be adjacent to the living spaces. Hosting gatherings and entertaining are a large part of this couple's lives, and since everyone gathers in the kitchen at a party, they brought the kitchen to the living space.

Richard Shugar designed the kitchen as a simple galley with bar seating so that the cook never feels isolated. The cabinetry echoes the tones of the other woodwork in the house, and hardware was kept to a minimum. A bookcase for storing cookbooks was built into the living room side of the bar, and glass-fronted cabinets for dishware keep the cabinet wall from feeling too heavy.

The living space overlooks the Willamette Valley and has doors that lead out to a deck where outdoor cooking and entertaining happen as well. This connection between the kitchen and the deck makes indoor/outdoor living easy.



Bedroom Suite

Sliding doors facing the view open the bedroom up to its private balcony, and capitalize the views of the valley. The owners preferred having private bathrooms, so the suite's layout has a walk-in closet right behind the bed, and bathrooms behind that flank a shared tub centered in the space.







BRITISH ARCHITECTURE INSPIRED
THE HIGH-VOLUME SPACES OF
THIS OREGON HOME

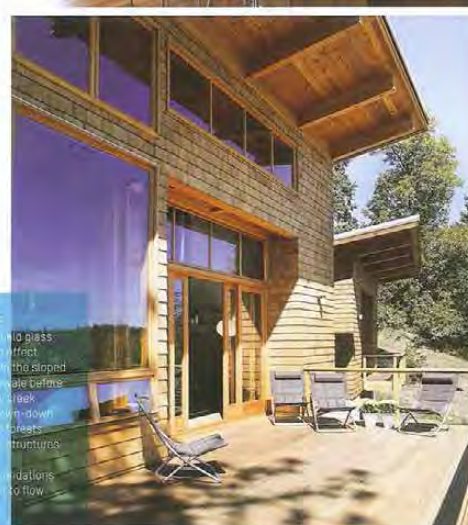
Fox Hollow's design is a trick on the eyes, too. "When you enter the house from one side, it looks like a one-story building," Shugar says, "but when you look at the view from down the hill, it looks like a really big home." Whether England or Oregon, uphill or down, sometimes the best solution lies in a simple shift of perspective.

—SARAH CASON

THE SUSTAINABLE FORESTRY INITIATIVE

At Mike Shelly of Sierra Pacific Windows, meeting Green's standards of sustainability were not a problem. All of his company's aluminum are harvested from sustainably grown wood that is certified under the Sustainable Forestry Initiative (SFI). They use energy efficient Low-E glass to provide thermal regulation and powdered aluminum anodizing that prevents ammonia from rising between them in the environment, something Shelly thinks greatly obstructed his project overall. The result is an aesthetically pleasing, comfortably functional and sustainable home that the owners will be able to enjoy for a lifetime," he says.

- **Flow over a smooth surface:** no field glass.
- **Flow over roughness:** no scaling effect
- **Flow over a smooth surface:** the sloped surface is different from the scale before showing a smooth boundary.
- **Flow over a rough surface:** the flow is down from the top of the roughness.
- **Flow over a rough surface:** the structures are different.
- **Flow over a rough surface:** the structures are different.
- **Flow over a rough surface:** the structures are different.
- **Flow over a rough surface:** the structures are different.





121 Lawrence Street
Eugene, OR 97401
541.342.5777

www.2-form.com



one people + one environment = 2fORM Architecture