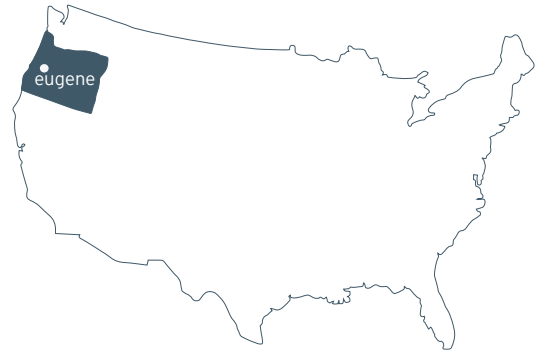
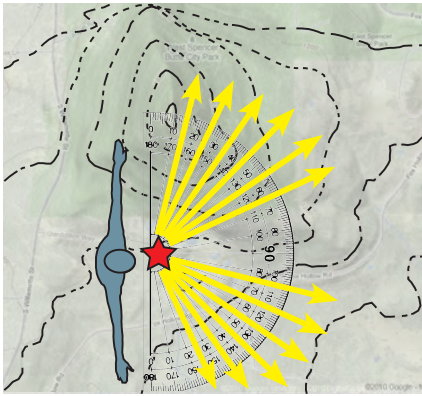


CHAMP-A-TEE RESIDENCE



Architect: Richard Shugar AIA, LEED AP
Project Manager: Peter Utsey, Associate AIA, LEED GA
General Contractor: Morrow and Sons Timberframing

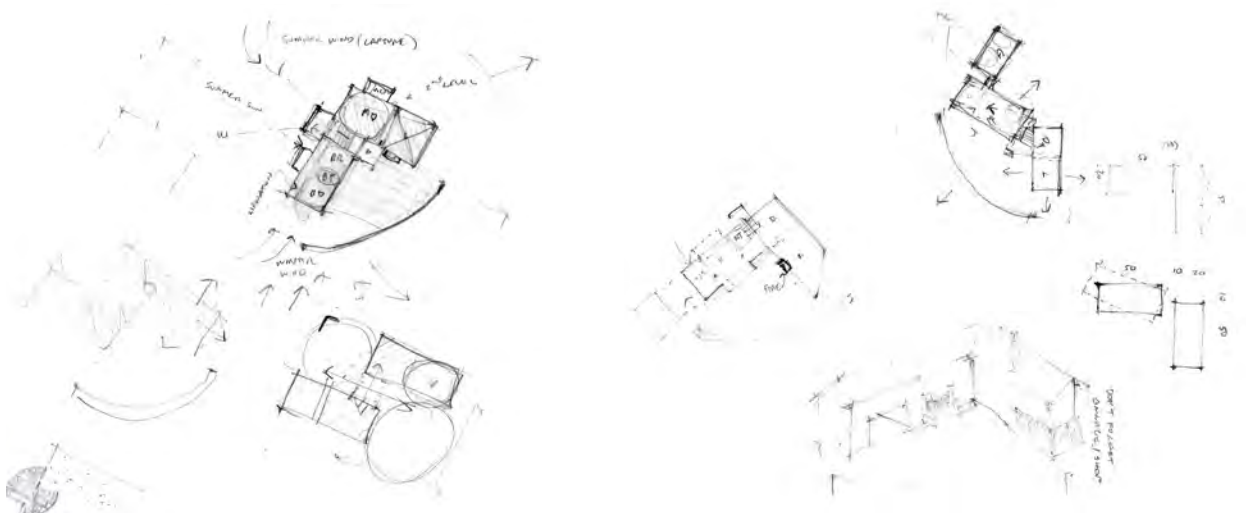
Completed 2013
Eugene, Oregon
4085 sq ft new construction



The Site

Located on the South side of Spencer's Butte, the Champ-a-tee residence showcases sustainable design, state-of-the-art technology, and thoughtful material selection.

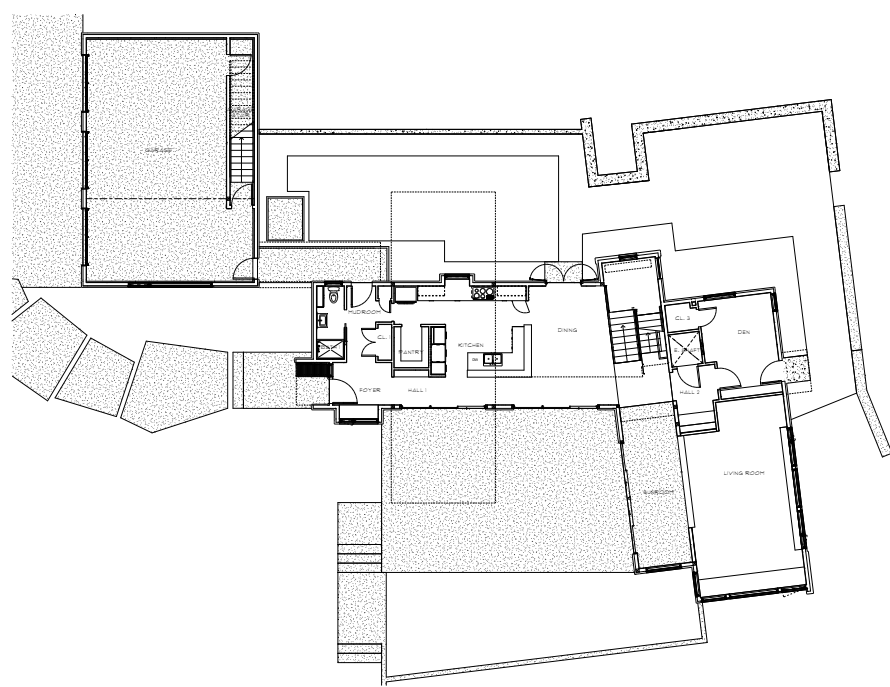




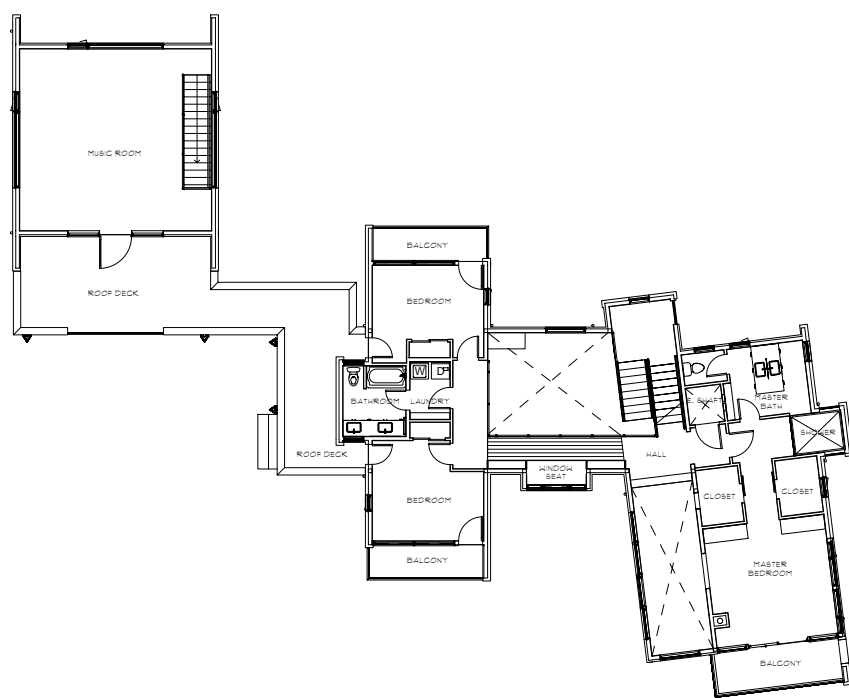
The homesite is oriented towards the pond, with the butte on the north and west sides.

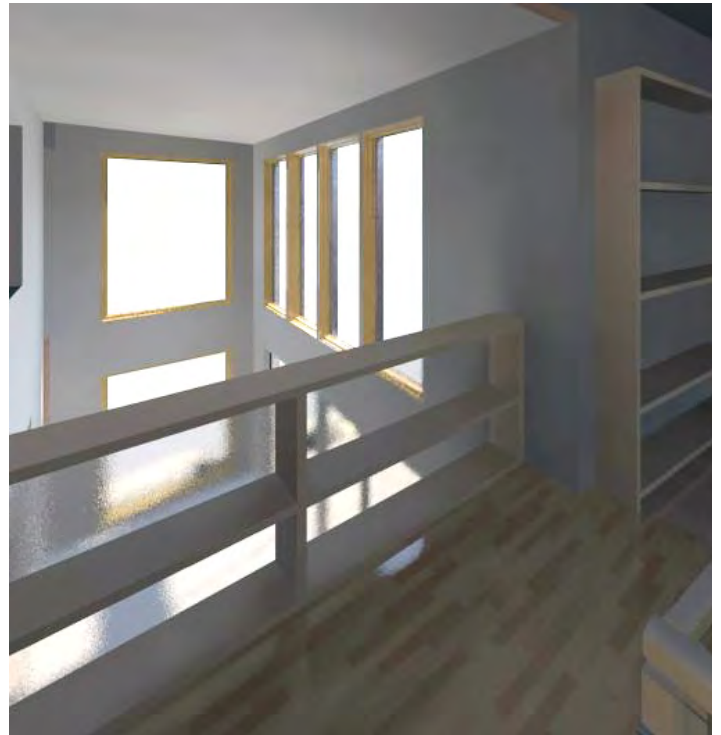


First Floor Plan



Second Floor Plan







Sustainable Design

The design optimizes daylighting, using high-performance windows and doors to celebrate the context of the house through framed views of the surrounding landscape. The performance of the building envelope is also emphasized, using advanced insulation techniques, an airtight wall assembly and an exterior rainscreen to maximize protection against the elements and achieve insulation values far beyond code.

Heating and cooling of the house relies on a geosource heat-pump. Combining a highly-efficient HRV system with radiant floor heating, the homeowners are able to control seven distinct thermal zones. When not occupied, the zones use the latest in sensors and automated home technology to keep the home comfortable while minimizing energy consumption.

The house also features the latest in renewable energy. Photovoltaic panels provide back-up energy for the residence and a charging station for an electric car, while solar hot water panels meet demand for domestic hot water. A vertical wind turbine, prominent at the site's entry, contributes to the production of energy at the residence.







Interiors

The design optimizes daylighting, using high-performance windows and doors to celebrate the context of the house through framed views of the surrounding landscape. The performance of the building envelope is also emphasized, using advanced insulation techniques, an airtight wall assembly and an exterior rainscreen to maximize protection against the elements and achieve insulation values far beyond code.

Heating and cooling of the house relies on a geosource heat-pump. Combining a highly-efficient HRV system with radiant floor heating, the homeowners are able to control seven distinct thermal zones. When not occupied, the zones use the latest in sensors and automated home technology to keep the home comfortable while minimizing energy consumption.

The house also features the latest in renewable energy. Photovoltaic panels provide back-up energy for the residence and a charging station for an electric car, while solar hot water panels meet demand for domestic hot water. A vertical wind turbine, prominent at the site's entry, contributes to the production of energy at the residence.

Water conservation is also emphasized at the residence. EPA Water Sense plumbing fixtures are used throughout the house, while the landscape was designed for water efficiency. Drought-tolerant native plants line the landscape, cared for with site-specific drip irrigation zones.











Even with the excess of energy production on site, energy-use is minimized throughout the residence. Appliances are Energy Star Rated, while the majority of lights are LED. Utilizing the homeowners interest and expertise in smart-home technology, a major goal of the clients was to eliminate all vampire loads in electrical circuits.

The Champ-a-tee residence is registered under the LEED for Homes green building certification program with the certification goal of LEED Gold.

AIA Design Awards

Second Place
People's Choice Award for Residential Architecture, 2013



Press

AIA SWO Construction Tour
SW Oregon Architect
March 2013

BRING Recycling Home and Garden Tour
BRING Recycling
September 2013

Client Feedback

"I can't emphasize how important it is to have an architect who listens to your dreams, desires, and needs as he creates a building plan from scratch. Our project is a complicated project, but the lines of communication have remained wide open between us as we have made our way through from the beginning of the project to its completion." -Katie Tibbitts



121 Lawrence Street
Eugene, OR 97401
541.342.5777

www.2-form.com



one people + one environment = 2fORM Architecture